

Cowboy Country Convenience Store & Strip Mall

Quality

Budget

Schedule

Communication

Watertown, SD

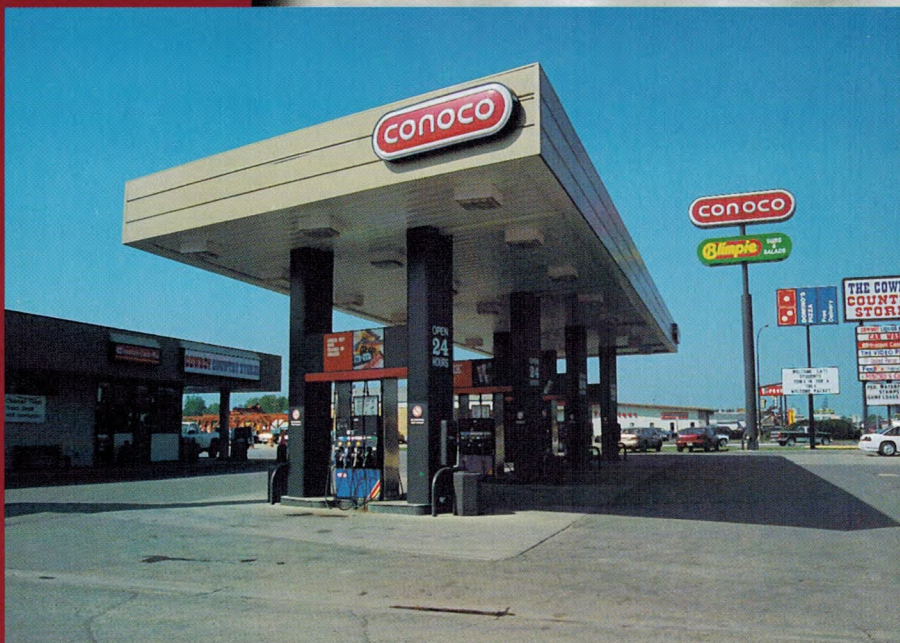


ABOUT THE PROJECT

Located on the original Cowboy Restaurant site, this new Butler building features a convenience store, tunnel car wash, video/tanning, video casino, liquor store, Blimpies Subs, and Dominos Pizza – all under one roof.

PROJECT FEATURES

- Butler Manufacturing Texture Cote exterior finish.
- Multi-tenant building resulted in square foot cost savings to the owner.
- Liquor store offers unique feature of “interior” drive-thru and a “shop-in” walk-in cooler.
- Blimpie Subs and Salads offers drive-thru facilities at the building corner.
- Tunnel car wash facility located behind the convenience store.



PROJECT SPECIFICATIONS

- Utilizes Butler Manufacturing Widespan Building System.
- 3,226 square foot convenience store.
- 1,574 square foot car wash.
- 9,7813 square foot total strip center.



TO LEARN MORE...

For more information on how C.I. Construction's project delivery systems can benefit you, call us for a consultation to discuss your project needs.



C.I. Construction, LLC

1210 Broadway
Alexandria, MN 56308
320-763-2998 • Fax: 320-763-7112
email: ciconstr@rea-alp.com